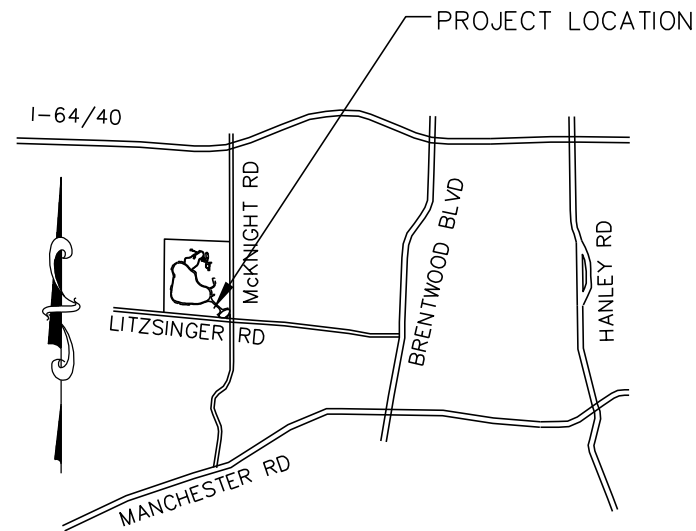


TILLES COUNTY PARK LITZSINGER ROAD AND McKNIGHT ROAD LADUE

ST. LOUIS COUNTY, MISSOURI
PARKS PROJECT NO. (P07W03)
ZIP CODE 63124



LOCATION MAP
NTS

GENERAL NOTES:

1. THE NEW STORMWATER SEWERS SHALL BE INSTALLED IN ACCORDANCE WITH THE METROPOLITAN ST. LOUIS SEWER DISTRICT CONSTRUCTION SPECIFICATIONS.
2. THE CONTRACTOR SHALL ONLY SAWCUT ASPHALT PAVEMENT WHERE INDICATED ON THESE PLANS. AFTER COMPLETION OF THE INSTALLATION OF THE NEW STORMWATER SEWER, THE CONTRACTOR SHALL BACKFILL THE TRENCH WITH GRANULAR BACKFILL TO THE EXTENTS OF THE PAVEMENT AND REPLACE THE ASPHALT PAVEMENT WITH 3" TYPE 'C' ASPHALTIC CONCRETE OVER 8" TYPE 'X' ASPHALTIC CONCRETE.
3. THE CONTRACTOR SHALL BE RESPONSIBLE FOR REPAIR AND REPLACEMENT OF THE NEW PAVEMENT FOR ONE (1) YEAR.
4. THE CONTRACTOR SHALL SEED ALL DISTURBED AREAS OF CONSTRUCTION IN ACCORDANCE WITH ST. LOUIS COUNTY PARKS DEPARTMENT STANDARDS.
5. THE AREA TO BE DISTURBED FOR THE IMPROVEMENTS AS DESCRIBED IN THESE PLANS IS APPROXIMATELY 2.0 ACRES.
6. THE CONTRACTOR SHALL PROVIDE ADEQUATE OFF-STREET PARKING FOR CONSTRUCTION EMPLOYEES. PARKING ON NON-SURFACED AREAS SHALL BE PROHIBITED IN ORDER TO ELIMINATE THE CONDITION WHEREBY MUD FROM CONSTRUCTION AND EMPLOYEE VEHICLES IS TRACKED ONTO THE PAVEMENT CAUSING HAZARDOUS ROADWAY AND DRIVEWAY CONDITIONS.
7. ALL STORM WATER SHALL BE DISCHARGED AT AN ADEQUATE NATURAL DISCHARGE POINT.
8. INTERIM STORM WATER DRAINAGE CONTROL IN THE FORM OF SILTATION CONTROL MEASURES ARE REQUIRED.
9. THE DEVELOPER IS REQUIRED TO PROVIDE ADEQUATE STORM WATER SYSTEMS IN ACCORDANCE WITH ST. LOUIS COUNTY AND M.S.D. STANDARDS.
10. NO SLOPE SHALL EXCEED 3:1 MAXIMUM.
11. ADDITIONAL SILTATION CONTROL MAY BE REQUIRED BY ST. LOUIS COUNTY DEPARTMENT OF HIGHWAYS AND TRAFFIC.
12. ANY DISTURBED OFF SITE PROPERTY (I.E. BUSHES, FENCES, MAILBOXES, ETC.) SHALL BE REPLACED, IN KIND, AT THE DEVELOPER'S EXPENSE.

ESTIMATE OF EARTHWORK

BULK CUT (TO SUBGRADE).....	2189 CY
BULK FILL * (TO SUBGRADE).....	1495 CY

LEGEND
EXISTING CONDITIONS

CONTOUR	--ELEV--
SPOT ELEVATION	+ELEV
SEWER	—S—
FOUND IRON PIPE	—R—
GRATE INLET	—G—
AREA INLET	—A—
DRAIN	—D—
ROOF DRAIN	—RD—
VENT	—V—
MANHOLE	—M—
LIGHT STANDARD	—L—
SIGN	—S—
MAILBOX	—MB—
GUY WIRE	—GW—
POWER POLE	—PP—
WATER VALVE	—WV—
WATER METER	—WM—
IRRIGATION VALVE	—IV—
GAS VALVE	—GV—
GAS METER	—GM—
GAS DRIP	—GD—
FIRE HYDRANT	—FH—
WATER SPRINKLER	—WS—
FLAGPOLE	—FP—
WATER LINE	—W—
GAS LINE	—G—
OVERHEAD ELECTRIC	—OE—
ELECTRIC BOX	—EB—
UNDERGROUND TELEPHONE	—UT—
TELEPHONE BOX	—TB—
BUSH	—B—
TREE	—T—

HEIDEMAN | ASSOCIATES, INC.

13545 Barrett Parkway Drive
Suite 200
St. Louis, Missouri 63021
Phone: 314-822-2317
Fax: 314-822-7858

Z/C
Consulting
Civil Surveying
Electrical
Mechanical
Engineers

DATE	BY	DESCRIPTION

Saint Louis
COUNTY
PARKS

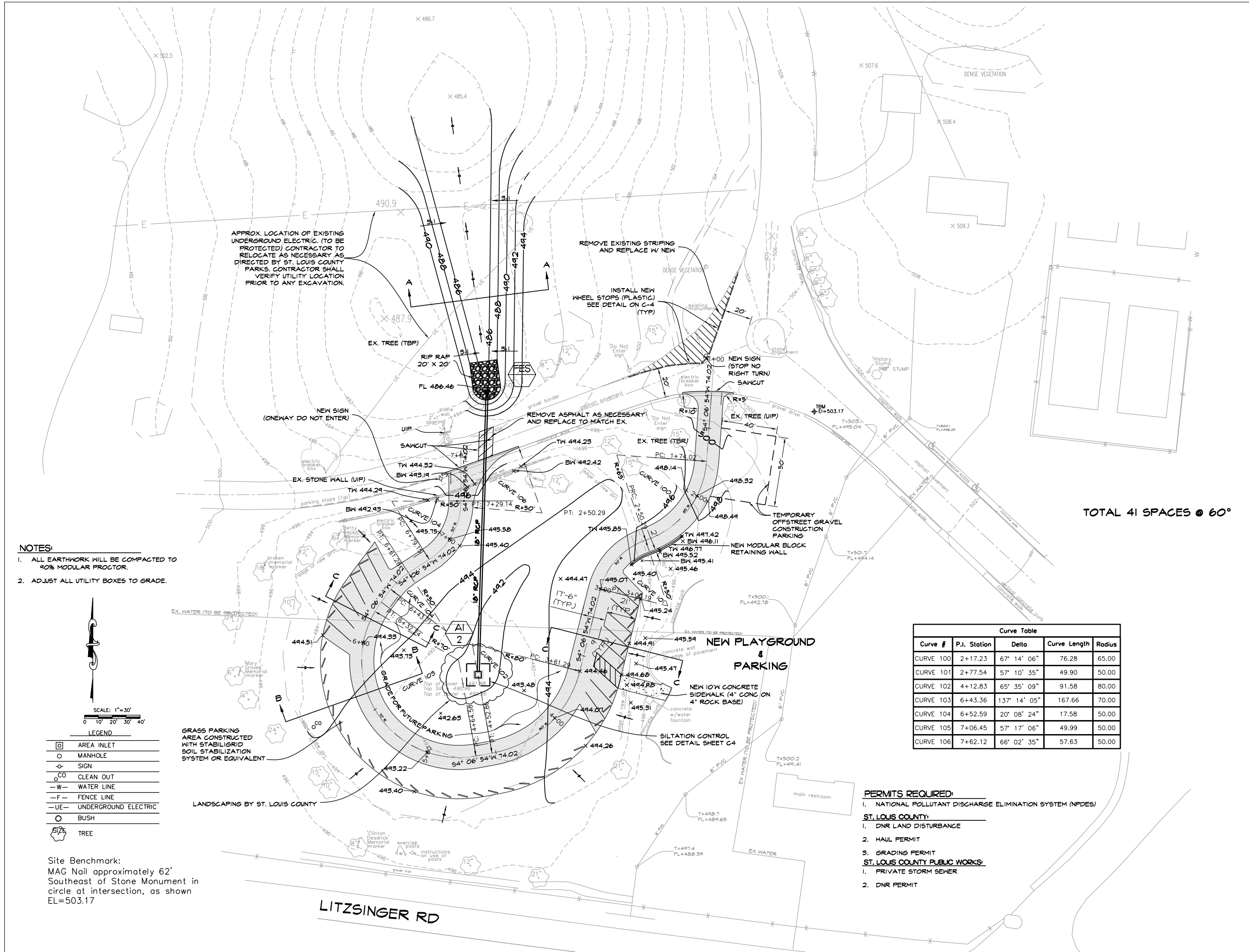
Lindsey Swanic
Director

INDEX OF SHEETS

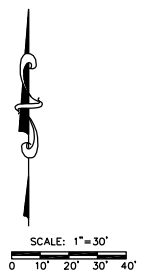
COVER SHEET.....	C1
PLAN.....	C2
PROFILE / CROSS SECTIONS.....	C3
SEWER PROFILE / DETAILS.....	C4

**TILLES PARK
PARKING
LOT**

Proj # 06524	Sheet No.:
Design by: DLS	C1
Drawn by: SJB	
Chkd. by:	
App. by:	
Date: 11-01-06	Revisions:



- NOTES:**
1. ALL EARTHWORK WILL BE COMPACTED TO 90% MODULAR PROCTOR.
 2. ADJUST ALL UTILITY BOXES TO GRADE.



LEGEND

□	AREA INLET
○	MANHOLE
⊕	SIGN
○	CLEAN OUT
-W-	WATER LINE
-F-	FENCE LINE
-UE-	UNDERGROUND ELECTRIC
○	BUSH
○	TREE

Site Benchmark:
MAG Nail approximately 62'
Southeast of Stone Monument in
circle at intersection, as shown
EL=503.17

Curve #	P.I. Station	Delta	Curve Length	Radius
CURVE 100	2+17.23	67' 14' 06"	76.28	65.00
CURVE 101	2+77.54	57' 10' 35"	49.90	50.00
CURVE 102	4+12.83	65' 35' 09"	91.58	80.00
CURVE 103	6+43.36	137' 14' 05"	167.66	70.00
CURVE 104	6+52.59	20' 08' 24"	17.58	50.00
CURVE 105	7+06.45	57' 17' 06"	49.99	50.00
CURVE 106	7+62.12	66' 02' 35"	57.63	50.00

- PERMITS REQUIRED:**
1. NATIONAL POLLUTANT DISCHARGE ELIMINATION SYSTEM (NPDES)
- ST. LOUIS COUNTY:**
1. DNR LAND DISTURBANCE
 2. HAUL PERMIT
 3. GRADING PERMIT
- ST. LOUIS COUNTY PUBLIC WORKS:**
1. PRIVATE STORM SEWER
 2. DNR PERMIT

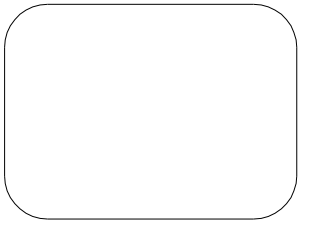
TOTAL 41 SPACES @ 60°

HEIDEMAN | ASSOCIATES, INC.
13545 Barrett Parkway Drive
Suite 200, Missouri 63021
St. Louis, Missouri 63021
Phone: 314-822-7657
Fax: 314-822-7658

Z/C
Consulting
Civil, Surveying
Electrical
Mechanical
Engineers

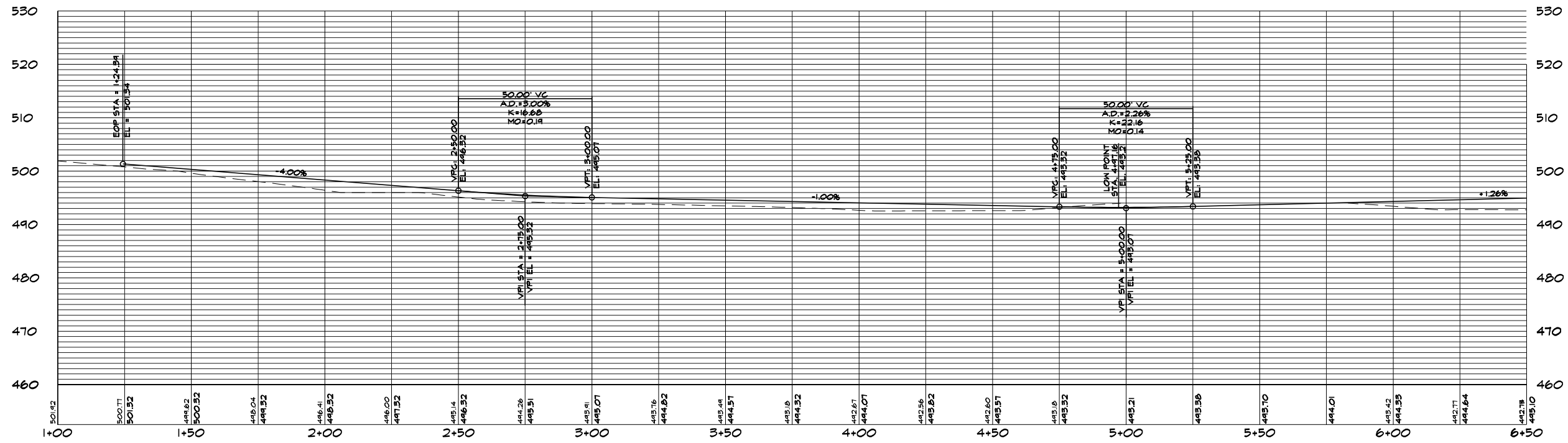
DATE	DESCRIPTION

Saint Louis COUNTY PARKS
Lindsey Swanick
Director

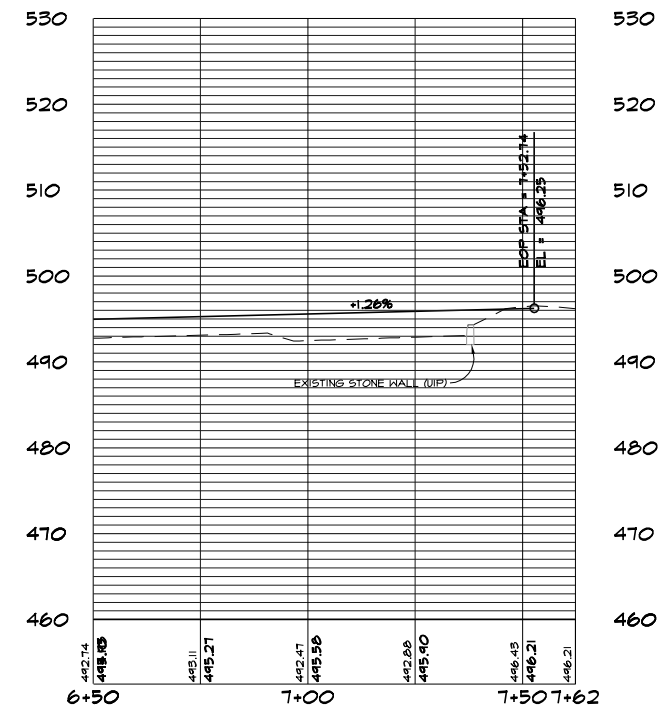


TILLES PARK PARKING LOT

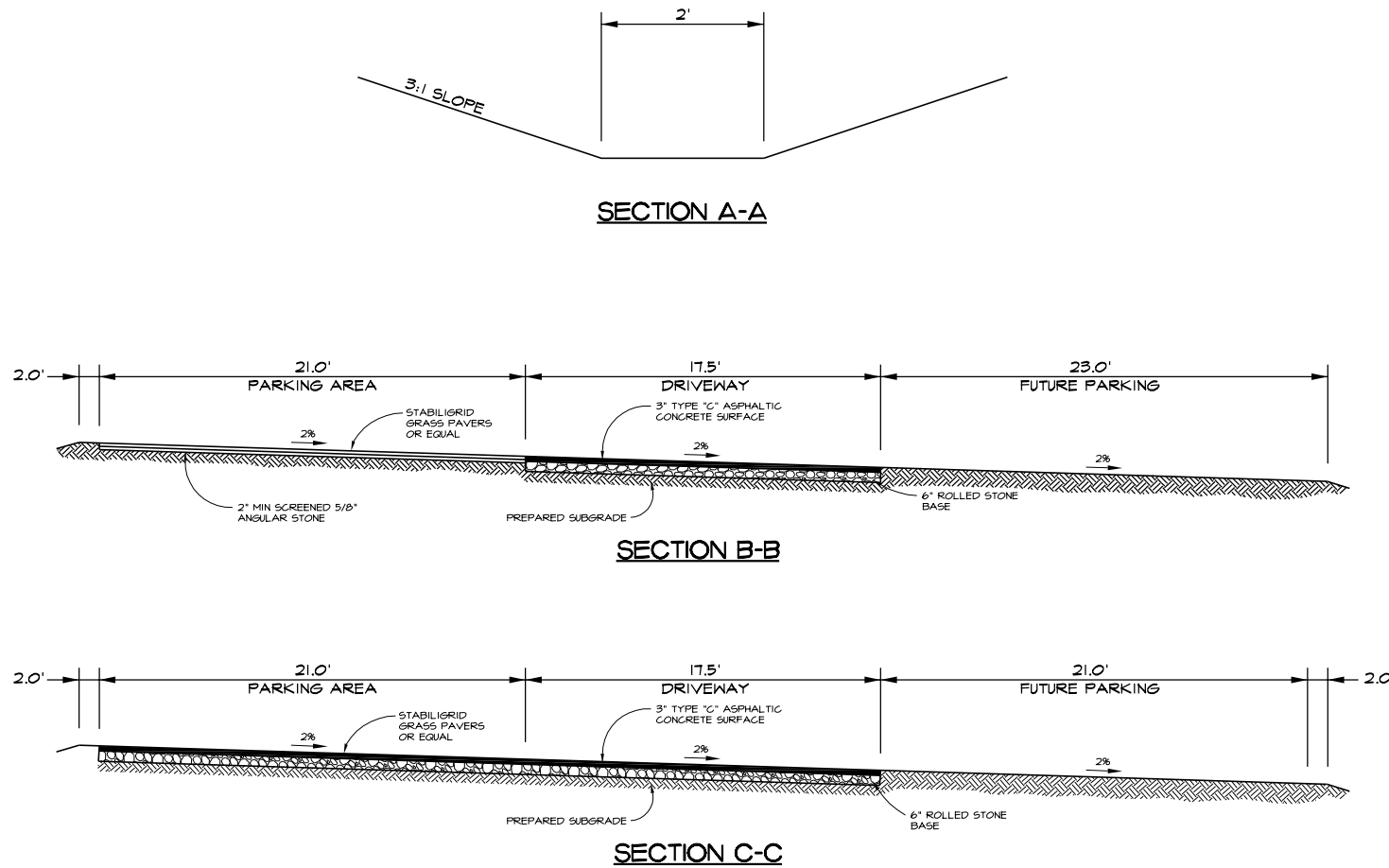
Proj # 06524	Sheet No.:
Design by: DLS	C2
Drawn by: SJB	
Chkd. by:	
App. by:	
Date: 11-01-06	Revisions:



PROFILE
 HORIZ. SCALE: 1"=20'
 VERT. SCALE: 1"=10'



PROFILE
 HORIZ. SCALE: 1"=20'
 VERT. SCALE: 1"=10'



HEIDEMAN | ASSOCIATES, INC.
 Consulting
 Civil, Surveying
 Electrical
 Mechanical
 Engineers

13545 Barrett Parkway Drive
 Suite 200
 St. Louis, Missouri 63021
 Phone: 314-922-7217
 Fax: 314-922-7658

Z/C

DATE	DESCRIPTION

Saint Louis COUNTY PARKS
 Lindsey Swanick
 Director

TILLES PARK
 PARKING LOT

Proj # 06524 Sheet No.:
 Design by: DLS
 Drawn by: SJB
 Chkd. by:
 App. by:
 Date: 11-01-6
 Revisions:

C3

