

www.hoofgrid.com



ECO-TERR Distributing Inc.

www.ecoterr.com



German Manufacturer's Fact Sheet

Product Name:

Branded as **HoofGrid-S50™** in the USA, bearing the German manufacturer's mark "ecoraster 101 S-50".

Product Description:

Latticed elements 33.3 x 33.3 cm; 5cm high with 2.5 mm wall thickness, made of durable elastic high-pressure polyethylene with patented bonding-plug system, (Patent No. 0576939 EPA/EPO) produced from selected pure recycled PE. The elements are resistant to fracture (-50° to +90° C), resistant to UV and frost, long-lived, incorruptible, non-polluting as well as resistant to ammonia, most acids, street salt, hot asphalt, gasoline.., and 100% recycled content/recyclable content. (According to TÜV/NORD Environmental Certificate).

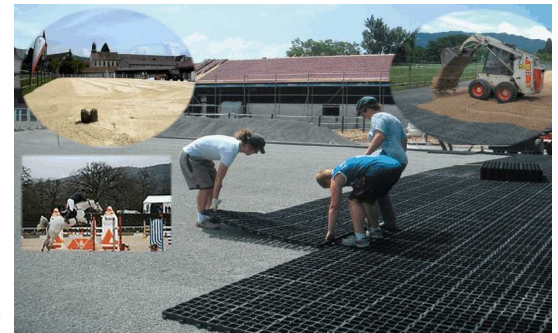
It has been demonstrated that **StabiliGrid-S50™** does not contain any pollutants for ground water and ground organisms.

Suggested Applications and usages:



Equine Applications

- ▶ Horse stables, paddocks, arenas
- ▶ Turnouts and riding paths
- ▶ Race tracks
- ▶ Side yards at homes
- ▶ Slope retention for hillsides and erosion control
- ▶ Livestock wash areas
- ▶ Driveways and parking areas.
- ▶ Drainage culverts and ditches
- ▶ Dog kennels and runs
- ▶ Grassy Park public areas
- ▶ Driving roadways through lawns



Cattle and Dairy Applications

- ▶ Feedlot footing
- ▶ Pasture management (prevention of nutrient runoff into surface waterways)
- ▶ Exercise/turnout areas
- ▶ Pervious confinement pen flooring
- ▶ Traffic paths through pastures (prevents soil compaction/mud creation)
- ▶ Trailering and loadout areas



Other Applications

- ▶ Loading zones
- ▶ Drainage culverts and ditches
- ▶ Slope retention and erosion control
- ▶ Pervious Parking - green grass parking lots
- ▶ Pervious Parking - natural crushed gravel roadways and driveways.
- ▶ Grass Reinforcement - prevention of damage to root structures from traffic

Installation:

HOOFGRID-S50™ may be "cut to fit" at the installation site quickly and free of problems, pre-cutting is not required. **HOOFGRID-S50™** may be cut with an angle grinder or circular saw, for small jobs with the compass saw or handsaw and the like.

refer also to:

www.turftrack.us

www.perfectfooting.com

Commercial/business information » www.HoofGrid.BIZ

Demonstrations and examples » www.HoofGrid.NET

Non-agricultural applications » www.StabiliGrid.com

Brochures etc » www.ecoterr.com/et_brochure_downloads.html

Technical Information: * According to current state of knowledge without claim to completeness.



The following typical, generic information is provided for illustration purposes only.

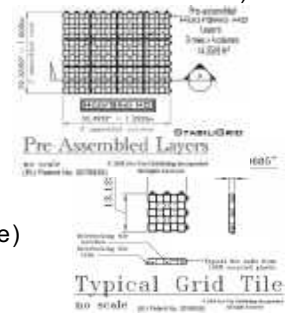
The following are provided only as concepts and guidelines.

These are not provided as specific installation instructions. Please request information concerning your project

...

Guaranteed resistance to pressure of the surface:

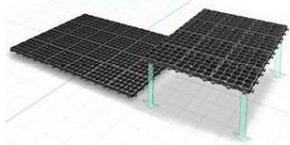
Dimensions: 33.3 x 33.3 x 5.0 cm (1.09361' x 1.09361' x 0.1640')
 Lattice size: 6.0 cm
 Web width: 0.6 mm
Porosity: 90% Open
 Wall thickness: 2.5 mm
 Own weight: 6.84 kg/m²
 Resistance to Pressure: 120.0 to/m² (24,577.94 lbs/ft²)
 Max. shearing load: ~ 1.4 to/m
 Load capacity: 20 MT/axle (22.45 US tons/axle)
 Tested by: TÜV, BECETEL and LGA
 Standard color: black



Material: 100% PE base material (Polyethylene) [<5% pigment, Anti-UV, carrier agents, etc.

Configuration: Coloring by means of 1-3% pigment, UV-Stabilized
 Stability of shape: Temperature range from -50° to + 90° C
 Change of Shape: ~0.5% (at standard temperature +20° to 80° C)
 Absorption of moisture: 0.01%
 Environmental compatibility: Completely harmless to plants, animals and microorganisms, material tested groundwater neutral
 Solubility: Resistant to acids and leaching solutions (salt, Ammonia, acid rain, etc.) as well as alcohol.
 Physical strength: Safety factor 1.3
 Joint strength of the latches: ≤5,600 newtons/meter
 Delivery form: 43 sheets, 12 pieces per sheet = 516 pieces (57,19 m², 618 ft²) per pallet
 Installation speed: up to 100 m² per hour per worker (1076 ft²/man-hour)

Ground Preparation: (generic, not site-specific):



Depends upon site condition: LOCAL conditions and usage will prevail.

- ▶ **Drainage** - if required: Construct a drainage layer using 5mm to 32mm clean angular rock (a.k.a. "ASTM 57 Clean" 5/8" to 3/4" inch diameter).
 - ▶ Depth of this layer will depend upon the local soil type, ground condition and climate. From zero to 45-60 cm depth (0" to 24").
- ▶ **Subbase:** Introduce an equalizing (leveling or "choker") layer of 5/8"-3/4" diameter clean/washed, angular gravel. Depth of this layer should be 3 to 5 cm (1.2" to 2").



Installation:

Backfill:

- ▶ Lay out the pre-assembled 12-piece layers of grids, snap them together and consolidate by tamping with plate vibrator or heavy cylinder.
- ▶ For backfill, an angular or round medium may be used.
- ▶ Fill the open cells with 5/8" diameter or smaller clean, washed gravel.

Finished Surface:

- ▶ For ease of cleaning, an overfill is recommended.
- ▶ For backfilling and for the overfill/topcover, a rounded clean stone ("pea gravel," "coarse grit" or "buckshot") may be used.
- ▶ The size of the backfill medium should be sufficient to preserve drainage (sufficient void space), and to resist migration (due to wind or water), while remaining small enough to provide cushion and to work easily with hand tools.

Delivery: Pallet= 57,19m² (618ft²) = 43 layers (1 layer = 12 pieces) = 516 pieces/Pallet

Pack dimensions

Dimensions of pallets: 105cm x 135cm x 223cm | 42"x53"x92" (BaWaHa)
 Weight of Pallets: ca. 400 kg/pallet | app.. 881 Lbs./pallet
 Contents of Container: 20 Pallets/container (3 pal. are hand packed)
 = 1,143.80 m²/container = 12,342 ft²/container

Reprint and Copyright:

2008 Copyright ECO-TERR Distributing, Inc. All Rights Reserved.

This document may be reproduced by the customers, clients and partners of E C O - T E R R Distributing Inc. This copyright Information must remain on all reproduced copies.