



Product Name:

Branded as **HoofGrid™** in the USA, bearing the German manufacturer's mark "Ecoraster 101 E-30" or "Ecoraster 101 EL-30"

Product Description:



Latticed elements 33.3 x 33.3 cm; 3cm high with 4mm wall thickness, made of durable elastic high-pressure polyethylene with patented interconnecting system, (Patent No. 0576939 EPA/EPO). Produced from selected pure recycled PE. The elements are resistant to fracture (flexible from -50° to +90° C || -58° to +194° F), resistant to UV and freezing, long-lived, incorruptible, non-polluting as well as resistant to ammonia and Urea, acids, street salt, hot asphalt, gasoline and petroleum distillates. 100% recyclable.

(According to TÜV/Environmental Certificate **DIN 38412**).

It has been demonstrated that **HoofGrid™** does not contain any pollutants for ground water and ground organisms, and does not decay into toxic materials.

Suggested Applications:

Equine Applications:

Horse paddocks, roundpens, turnouts, barn aisles and stalls, stall runouts, arena, feedroom flooring, wash area, trailering areas, crosstie posts, etc.

Cattle and Dairy Applications:

Feedlot footing, pasture management (prevention of nutrient runoff into surface waterways), exercise/turnout areas, pens, traffic areas through pastures (prevents soil compaction/mud creation), etc.

Installation:

HoofGrid™ may be "cut-to-fit" at the installation site quickly and free of problems, pre-cutting is not required. They may be cut with an angle grinder or circular saw, for small jobs with the compass saw or handsaw and the like.

Technical Information:

* According to current state of knowledge without claim to completeness.



Dimensions: 33.3 x 33.3 x 3.0 cm ||
 Lattice size: 6.0 cm
 Web width: 0.6 mm
 Wall thickness: 4.0 mm
Porosity 82% open
 Own weight: 6.20 kg/m²
 Resistance to Pressure: 250 MT/m² [51,204 lbs/ft², 25.602 tons/ft²]
 Max. shearing load: ~ 1.1 to/m
Load capacity: 20 MT/axle (22.45 US Tons/vehicle axle)
 Tested by: TÜV and LGA
 Standard color: black

Material:

100% PE base material (Polyethylene) [<5% pigment, Anti-UV, carrier agents, etc.]



Configuration: Coloring by means of 1-3% pigment additives, UV-Stabilizers, etc.
 Stability of shape: Temperature range from -50° to +90° C
 Change of Shape: ≤0.5% (at standard temperature +20° + 80°)
 Absorption of moisture: 0.01%
 Environmental compatibility: Non-toxic to plant and animal life, material tested groundwater/surface water neutral; does not decay into toxic materials, etc.
 Solubility: Resistant to acids and leaching solutions (salts, ammonia, acids, etc.), petroleum distillates, solvents, etc.

Physical strength: Safety factor 1.3
 Joint strength of the latches: ≤ 530 N
 Resistance to pressure of the surface (compressive strength): 250,000 kg/m² || 51,204 lbs / ft²
 Maximum shearing load of the attachment elements: 1,1 to/m
 Delivery form: 71 sheets, 12 pieces/sheet
 each pallet = 94,43m² = 1018.9 ft²
 Installation speed: ≤ 100m² (1,076ft²) per hour per worker

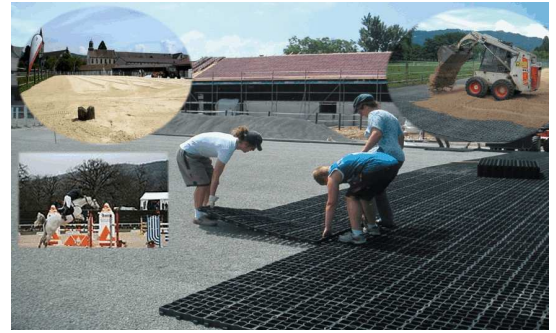
~ for illustrative purposes only ~

The following typical, generic information is provided for illustration purposes only. It is only applicable to the standard-duty HoofGrid™.

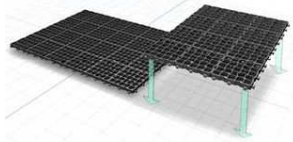
For HoofGrid HD™ or HoofGrid-40™ information please refer to those technical data sheets, available at:

www.stabilgrid.biz or www.hoofgrid.biz

The following are provided only as concepts and guidelines.



Ground Preparation:
(generic, not site-specific):



Depends upon site condition: LOCAL conditions and usage will prevail.

- ▶ **Drainage** - if required: Construct a drainage layer using 5mm to 32mm clean angular rock (a.k.a. "ASTM 57 Clean" 5/8" to 3/4" inch diameter).
 - ▶ Depth of this layer will depend upon the local soil type, ground condition and climate. From zero to 45-60 cm depth (0" to 24").
- ▶ **Subbase:** Introduce an equalizing (leveling or "choker") layer of 5/8"-3/4" diameter clean/washed, angular gravel. Depth of this layer should be 3 to 5 cm (1.2" to 2").



Installation:

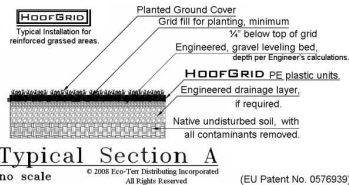
- ▶ Lay out the pre-assembled 12-piece layers of grids, snap them together and consolidate by tamping with plate vibrator or heavy cylinder.

Backfill:

- ▶ For backfill, an angular or round medium may be used.
- ▶ Fill the open cells with 5/8" diameter or smaller clean, washed gravel.

Finished Surface:

- ▶ For exterior applications, standard duty HoofGrid™ must be overfilled with 5 cm (2") minimum topcover (clean sand or gravel).
- ▶ For interior applications, standard duty HoofGrid™ does not require overfill.
- ▶ For ease of cleaning, an overfill is recommended.



NOTE: For backfilling and for the overfill/topcover, a rounded clean stone ("pea gravel," "coarse grit" or "buckshot") may be used.

The size of the backfill medium should be sufficient to preserve drainage (sufficient void space), and to resist migration (due to wind or water), while remaining small enough to provide cushion and to work easily with hand tools..

Delivery: 1 Pallet = 94,43m²

71 layers (each layer consisting of 12 pieces)
= 852 pieces / Pallet
= 1018.9 ft² / Pallet

Pack dimensions:

Dimensions of pallets: 105cm x 135cm x 223cm (BaWaHa)
Weight of Pallets: About 585 kg/pallet || 1,069 lbs. (avdp)
Contents of Container: 20 Pallets/container (hand packed)
= 1,888.60m²/container
= 20,379 ft²/container (AVDP)

Reprint and Copyright:

2008 Copyright ECO-TERR Distributing, Inc. ~All Rights Reserved~
This document may be reproduced by the customers, clients and partners of
ECO - TERR Distributing Inc.
This copyright Information must remain on all reproduced copies.

Translated from German Manufacturer's specifications sheet 17 August 2008.