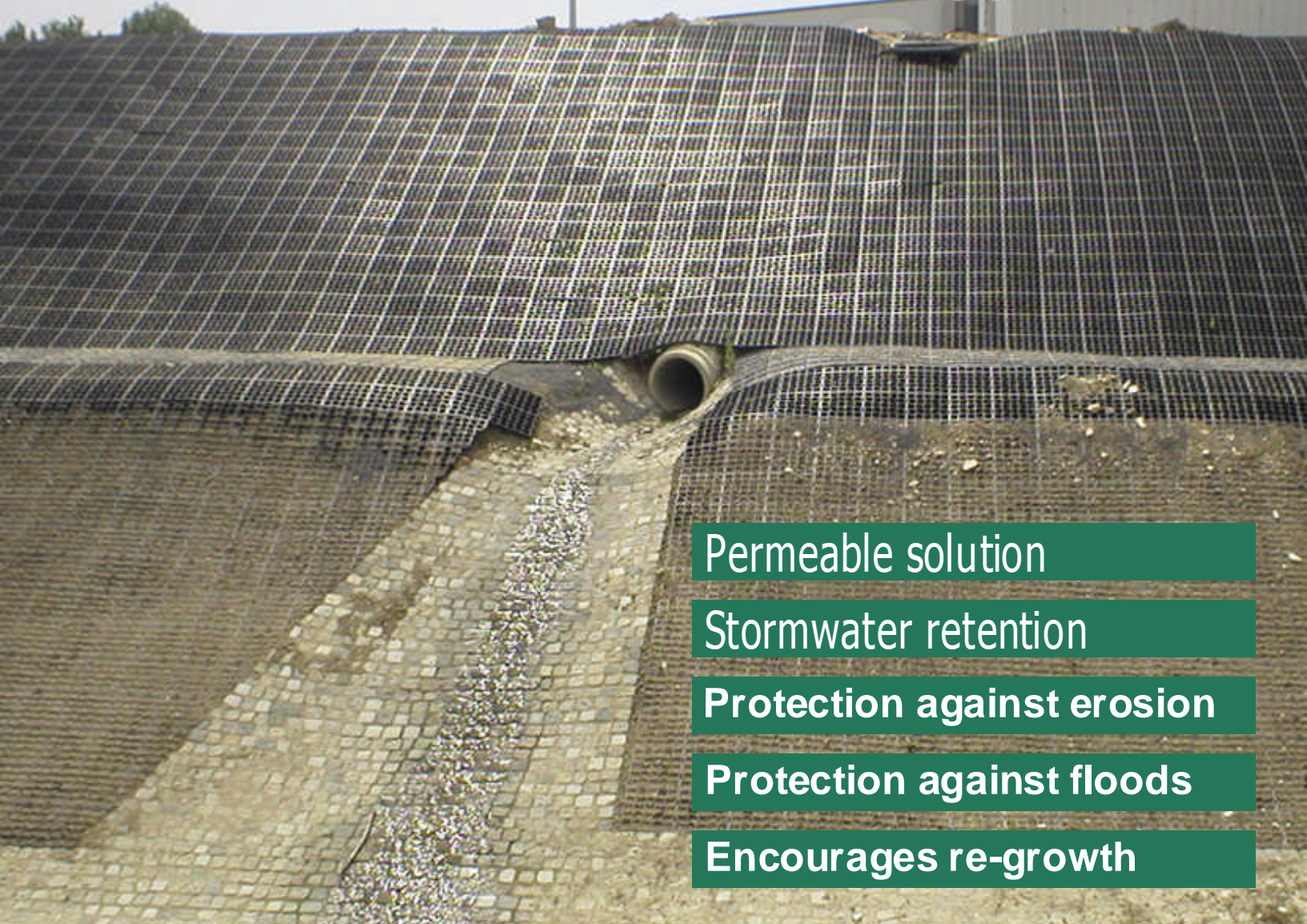


Environmental technology



- Permeable solution
- Stormwater retention
- Protection against erosion
- Protection against floods
- Encourages re-growth



STABILIGRID™

Surface reinforcement with natural drainage

- ✓ Environmentally sound
- ✓ Ecologically friendly
- ✓ Regulation of moisture level
- ✓ Surface reinforcement reflecting natural conditions
- ✓ Patented safety locking system



Protect against erosion by reinforcing slopes and embankments with STABILIGRID™

Reinforcing slopes and embankments with a reliable system for protection against erosion has always been a central talking point in road construction and landscaping.

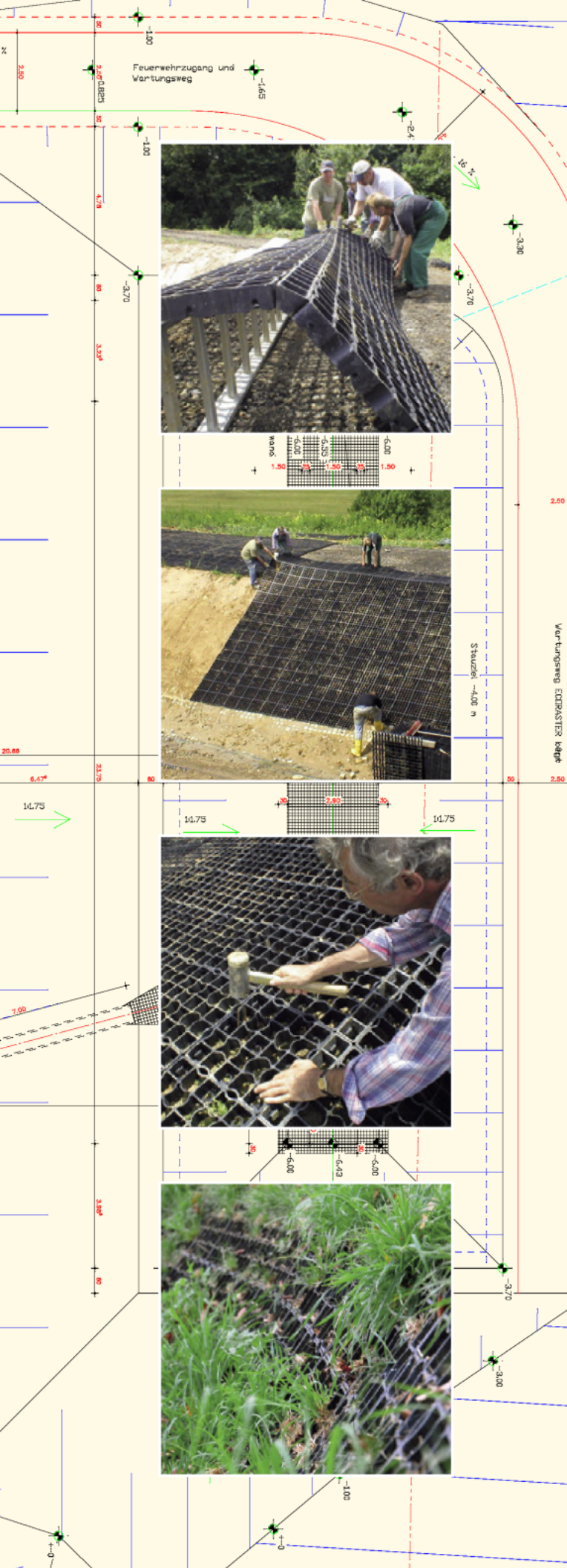
The fundamental requirements for use in this area are optimally fulfilled by STABILIGRID™. When installed, a STABILIGRID™ surface permanently holds back the forces of erosion with its self-stabilizing safety locking system and over 200 expansion joints per square meter. That's why the STABILIGRID™, which is certified by the German TUV (Technical Supervisory Association) as being environmentally neutral in accordance with DIN 38412, is perfectly compatible with nature, despite its extreme durability.

That makes STABILIGRID™ the ideal ground reinforcement system for challenging ground and water construction projects alike. The water regulating properties of the open grid construction make a laid STABILIGRID™ surface a permeable solution, which reflects natural conditions - just as it should be in the perfect ecological policy.

Back to nature with STABILIGRID™

After preparing the slopes's surface, the STABILIGRID™ sections can be installed and, if required, fixed with ground pins (only necessary on extremely steep slopes). The grids can then be filled with earth and the suitable seeds sown. After a few weeks the grids are substantially turfed and fit in with their surroundings by blending into the natural scenery. STABILIGRID™ offers immediate and permanent protection against erosion, which will continue to be strengthened by the formation of root networks beneath the large vegetation surface.

For those who cannot wait that long for the green vegetation, there is always the quick version: the pregrown STABILIGRID™ grass modules, which offer you a fresh green surface within just a few hours. Contact your local supplier concerning the availability.



Low Impact Development

Low Environmental Profile ...



Stabil iGrid™ ... that rainfall and turbulence will never again pose a problem!

The ground plays an important role in the natural cycle of water.

Stabil iGrid™ absorbs and stores rainwater on a large scale returns it to groundwater reserves, filters it on the way down, and then releases it back into the atmosphere via evaporation or transpiration.

If the natural cycle of water is interrupted, this begins to destroy the ground's natural functions:

- ❖ Cleansing the surface of the Earth,
- ❖ Percolation into the soil,
- ❖ Purification of the water – by natural microorganisms,
- ❖ Natural filtration, and
- ❖ Recharging the groundwater and aquifers.

The consequences are a higher and quicker surface runoff into the sewers, flood catastrophes, lowering of the groundwater level, deterioration of the microclimate as well as the desolation of the landscape and populated areas.

For new developments or expansions of residential areas and industrial zones, stormwater retention tanks and surface reinforcements therefore also take on an increasingly large economic function (see pictures).

Stabil iGrid™-reinforced stormwater retention assets allow the controlled reabsorption of rainwater over a large surface area. This solution reflects the natural conditions and can be made perfect by the addition of optional measures such as the inclusion of greenery.

This can be done easily by planting the slopes above the lining of the tank.

Stabil iGrid™ has all the physical attributes required to guarantee long term necessary surface stability of the often quite steep slopes, and to incorporate downhill-slope forces safely.

Installation ...

- ❖ It's that quick and simple to lay the Stabil iGrid™ yourself!
- ❖ Twelve individual sections are pre-connected in the factory to form easy-to-install units.
- ❖ This means that you can lay an area of 1.33 m² in one go.

... **Installing StabilGrid™ couldn't be simpler!**

For further information on ground preparation, installation, surface composition and filling, please refer to the separate installation manual.

Step 1:



Easy to install 12 pieces at a time (application rate = ca. 1,000 ft²/man-hour).

Step 2:



Lay out and align the tabs and slots, an entire row at a time.

Step 3:



Snap securely into place (tensile strength of the connectors = 1.4 metric tonnes / meter).

Step 4:



Ready for the next row: all sections are firmly connected to each other.

Further applications ...

The system solutions Stabil iGrid HD™, Stabil iGrid-S50™, Stabil iGrid-40™, and HomeGrid™ are specially developed for rainwater infiltration-based surface reinforcement and are particularly suited for permeable solutions in road and footpath construction, for introducing greenery to industry and commercial building projects and for site clean-up, and encourages re-growth and environmental protection.



For comprehensive advice or assistance, please contact:

Keith Roberts
 311 West Spring Street, Fayetteville, AR 72701
 Web: www.erosionstop.com
 E-mail: keith@erosionstop.com
 Phone: 479-502-1515
 FAX & Voicemail: 800-507-0948



CONSTRUCTIVE
EROSION CONTROL



TÜV and TÜV/nord are the registered trademarks and property of Technischer Überwachungs-Verein and its associates. Used by permission. The trademark and name "StabiliGrid" are property of EDI, shared with the Purus group only. "Ecoaster" is the property and registered trademark of the Purus Group, shared by agreement with EDI.

2008 Copyright ECO-TERR Distributing, Incorporated and of the Purus group. ~ All Rights Reserved. ~
 This document may be reproduced by the customers, clients and partners of Eco-Terr Distributing Inc. only.
 Copyright Information must remain on all reproduced copies, including graphical images. t: (425) 657-7958 f: (425) 391-4890

www.StabiliGrid.com | www.StabiliGrid.NET | www.StabiliGrid.BIZ